

NASMHPD

Annual 2021 Commissioners Meeting

988 Crisis Response Across the Continuum of Care

Introductions

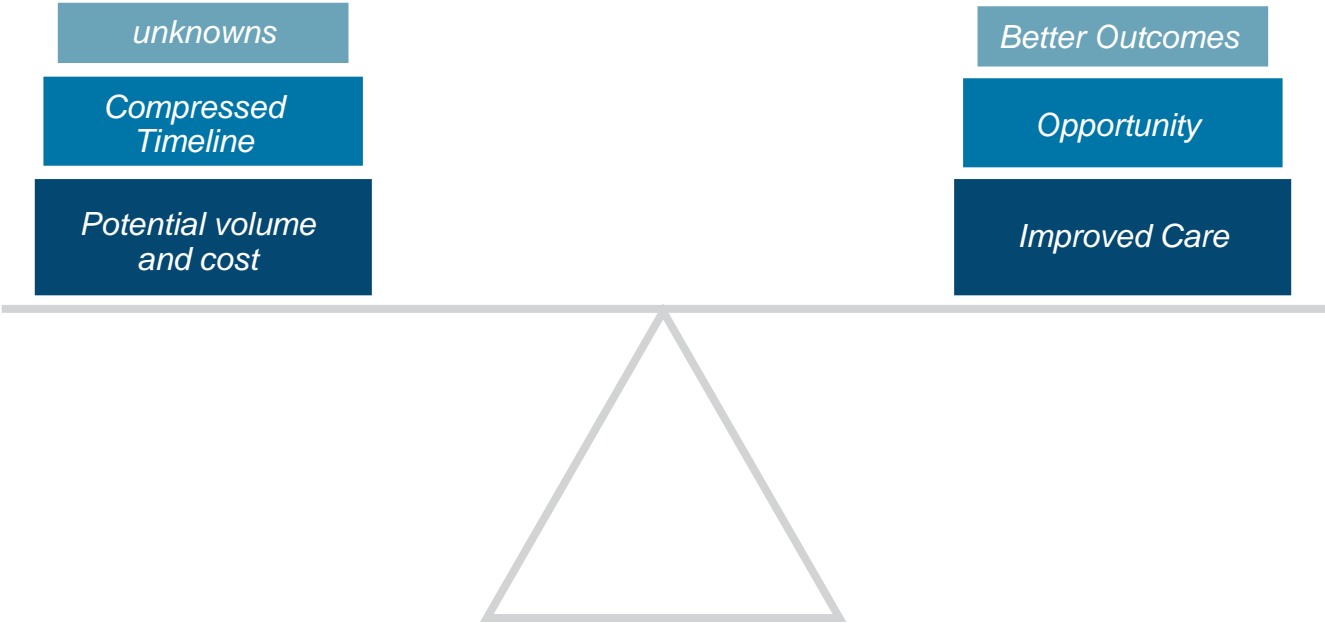


Cathleen Panowicz
*Client Development Executive,
Public Sector East*



Stu Parker
Director, Public Sector West

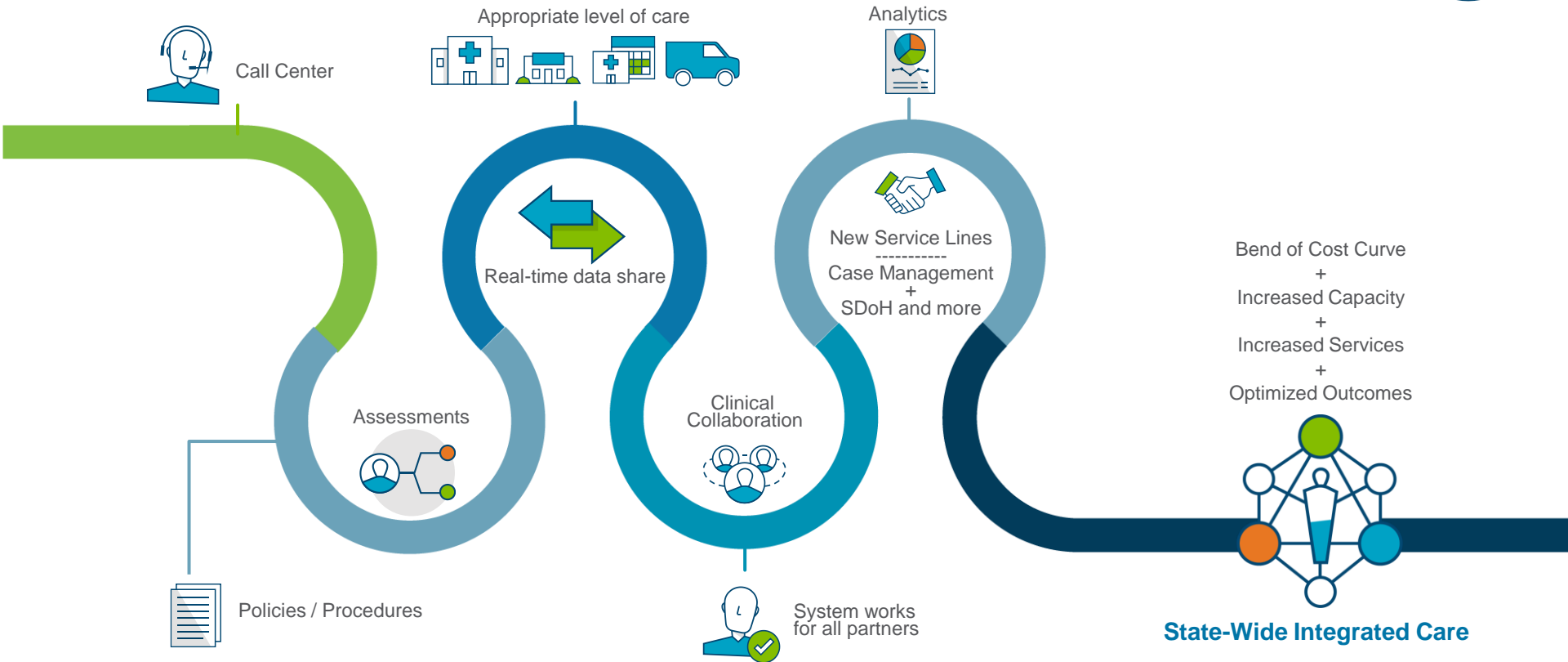
Challenges and Opportunities



Crisis Management & 988

The Journey to 988

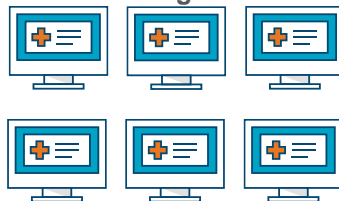
The progression to a crisis management services system



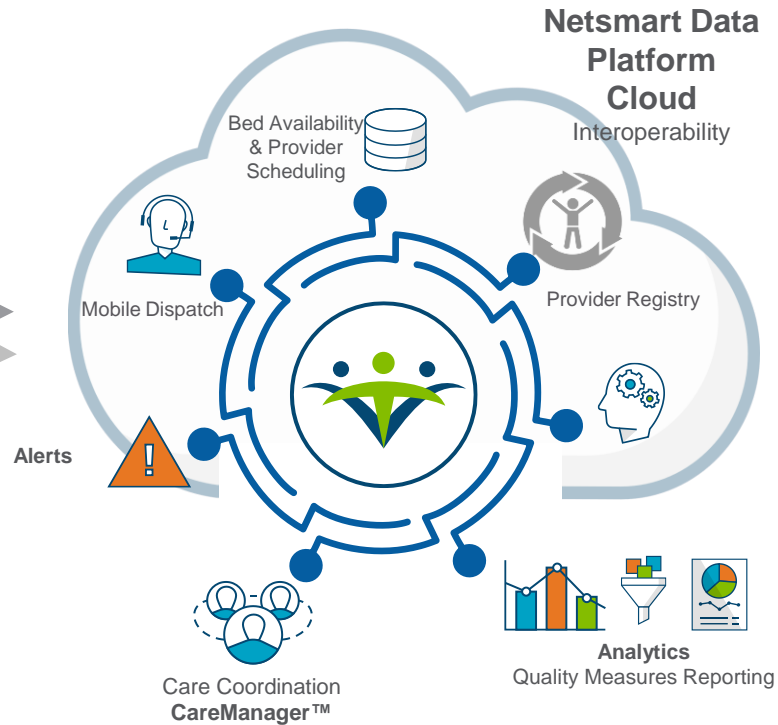
Netsmart Interoperability & Data Warehouse Repository Platform



Integration
Engine

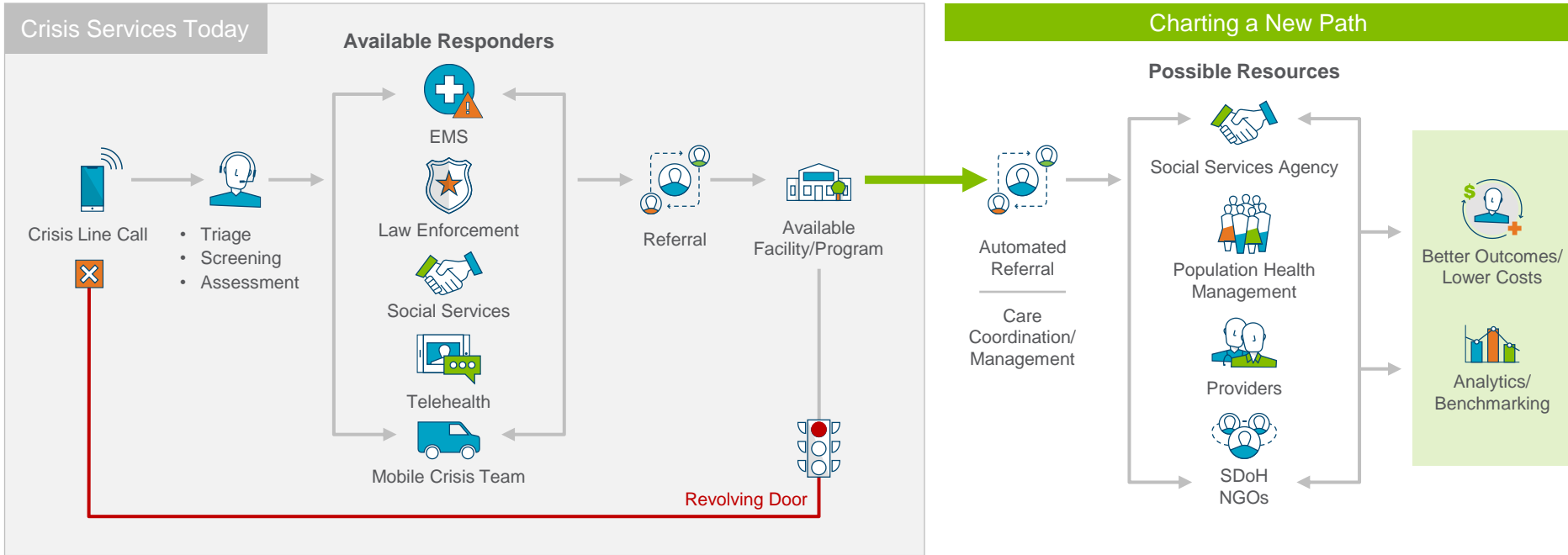


Provider & Hospital Network
Data Inputs
Behavioral Health Providers &
Contracted Providers



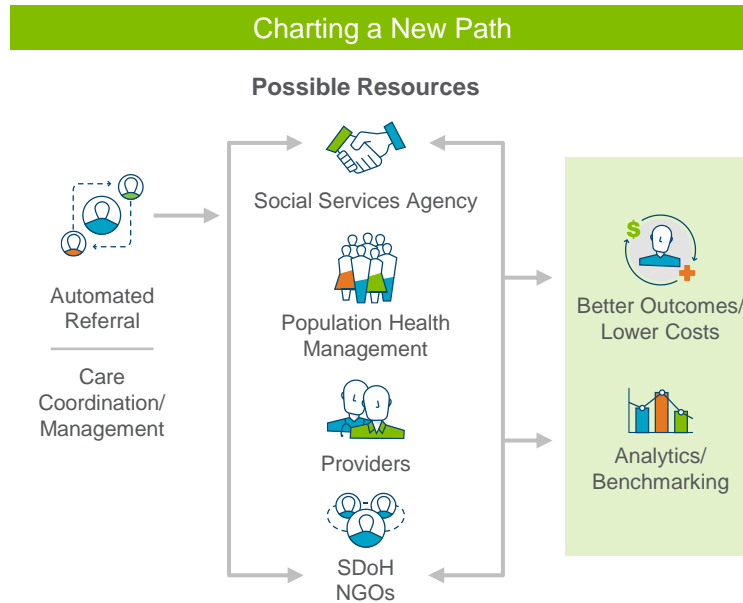
Supporting Whole-Person Care Through Crisis

Stop the Revolving Door



Supporting Whole-Person Care Through Crisis

Stop the Revolving Door





Behavioral Health



Intellectual/
Developmental
Disabilities



Public Health/
Population Health
Management



Addiction
Treatment



Government Communities We Serve



Vital Records



Senior Living/
Veterans' Homes



Corrections



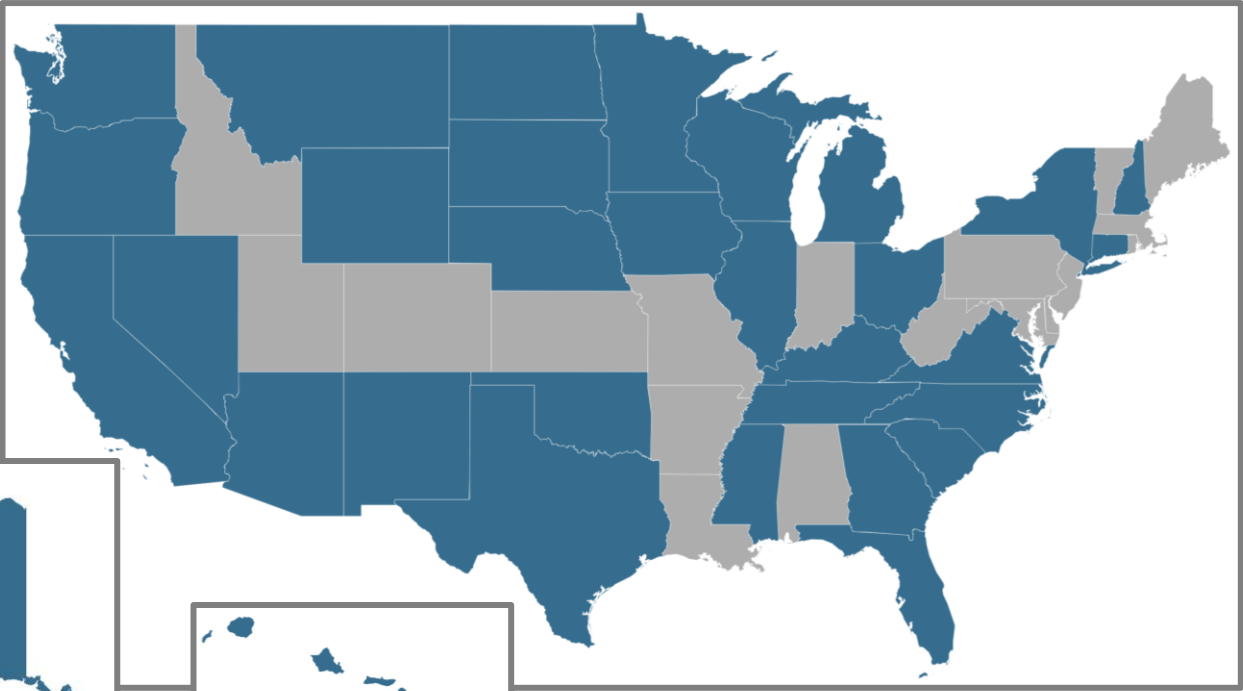
Social
Services



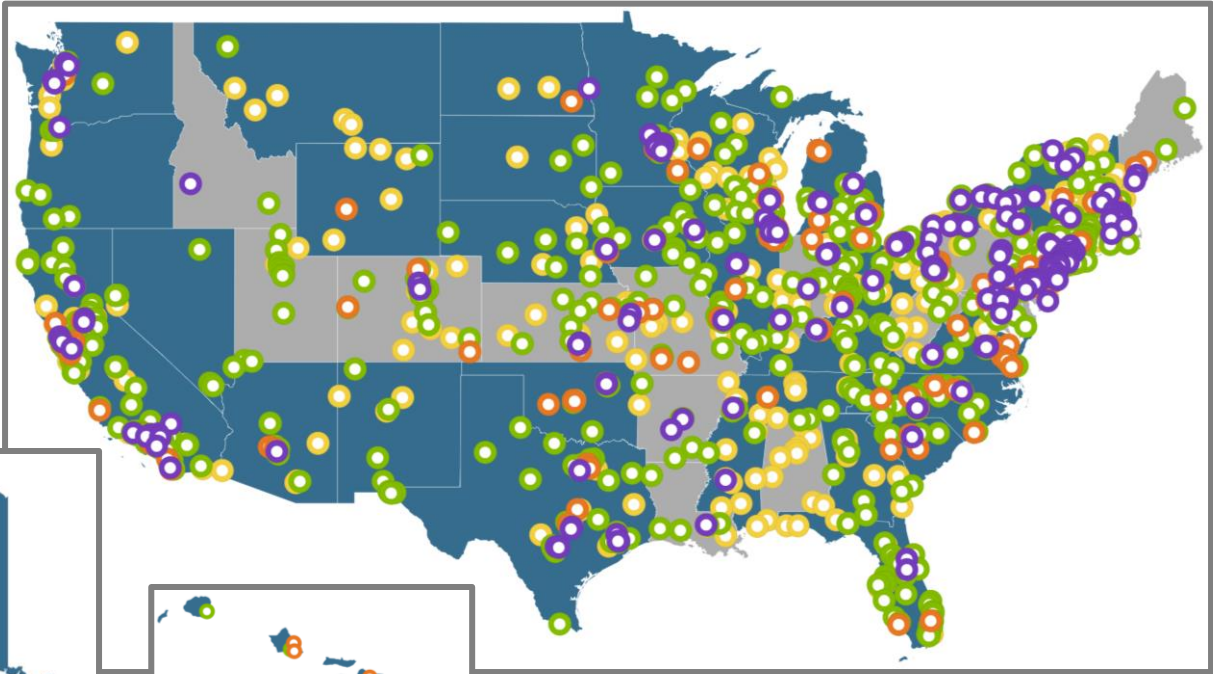
Child and
Family
Services



National Footprint – *State Clients*



National Footprint – *Community Providers*



- Home Care
- Behavioral Health
- Social Services
- Senior Living



Crisis Management

The Intersection of Technology, Innovation and Legislation

🕒 Tuesday, September 28 at 2:00 p.m. EDT

🗣️ Speakers

- **Brandie Williams**

Director of Operations, Rappahannock Area Community Services Board

- **Dr. Joe Parks**

Medical Director, National Council for Mental Wellbeing

- **Julie Hiatt**

Senior Director of Population Health, Netsmart

📄 Registration link: pages.ntst.com/CrisisMgmt_TheIntersection

Contact Us



Stu Parker

Director

Public Sector West

sparker@ntst.com

720-344-5566



Cathleen Panowicz

Senior Client Development Executive

Public Sector East

cpanowicz@ntst.com

913-707-4684

www.ntst.com

<https://pages.ntst.com/NASMHPD21.html>



Netsmart